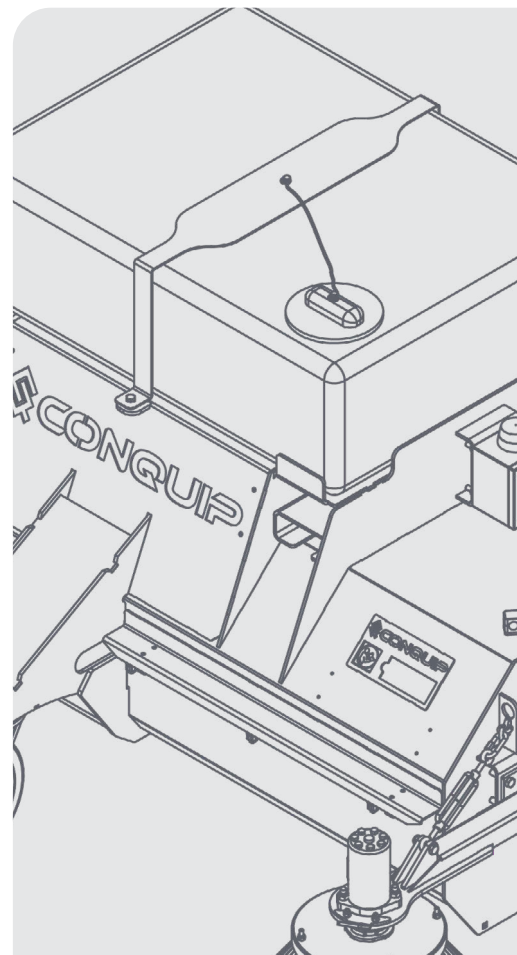


USER GUIDE

POWERBRUSH FORKLIFT SWEEPER



DISCLAIMER

Do not attempt to handle or operate this equipment before you have received sufficient training. Before use, operatives must have carried out all checks featured on the Visual Inspection Sheet on page 23. It is imperative that you have read the General Safety Instructions on page 24 and sufficiently familiarised yourself with the Operational Procedures in this document.

Note that this item is compliant only to the standards specified in this User Guide and it is therefore the duty of the responsible person(s) to review and ensure compliance.

CONTENTS

PRODUCT INFORMATION	
INTRODUCTION	04
SPECIFICATION	05
PARTS DIAGRAM	08
OPERATIONAL PROCEDURES	
IMPORTANT USAGE NOTES	16
KERB BRUSH ASSEMBLY	16
SETTING UP	17
USING THE POWERBRUSH	19
AFTER USE	20
REPLACING THE MAIN BRUSH SECTIONS	21
MAINTENANCE & INSPECTION	
MAINTENANCE REGIME	22
VISUAL INSPECTION SHEET	23
GENERAL SAFETY INSTRUCTIONS	
SAFETY INSTRUCTIONS	24
GENERAL NOTES	25
LEGAL	
TERMS AND CONDITIONS	26
EC DECLARATION OF CONFORMITY	30
STANDARDS AND REGULATIONS APPLICABLE	31

INTRODUCTION

OVERVIEW

The Conquip Powerbrush is a hydraulically powered forklift sweeper that cleans and collects dirt and waste. It features a large 250-litre water tank with two discharge options from the dispenser bar: drip-feed or pressurised spray.

The unit is both durable and inexpensive to maintain and can be customised with an optional kerb brush for cleaning kerbs and gullies.

The Powerbrush is a very cost effective and easy way to keep construction sites clean and safe at all times. It offers total flexibility and is much cheaper than hiring a road sweeper.

KEY BENEFITS

- Available as a standard base unit with drip-fed water or a pressurised water spray system for enhanced dust suppression.
- The seven brush sections can be replaced quickly and their height can be easily adjusted as they wear.
- Simple hydraulic system with a single one-way hydraulic valve, reducing the number of wearing parts.
- Seven grease points for easy maintenance: two on each wheel and one on the main shaft bearing.
- Robust hopper collects dirt and waste and the durable design provides protection from manhole covers.
- Three wheels for maximum stability and the ability to follow uneven ground.
- Compatible with any forklift or telehandler with a double acting auxiliary service.

OPTIONAL EXTRAS

- Kerb brush for cleaning gullies and kerbs.

HYDRAULIC FLOW RATE & PRESSURE

- Hydraulic flow rate: maximum 60 litres per minute continuous, 75 litres per minute intermittent.
- Hydraulic pressure: maximum 175 bar continuous, 190 bar intermittent.
- Maximum pressure drop if flow rate and pressure are high: 135 bar continuous.

SPECIFICATION

THE RANGE

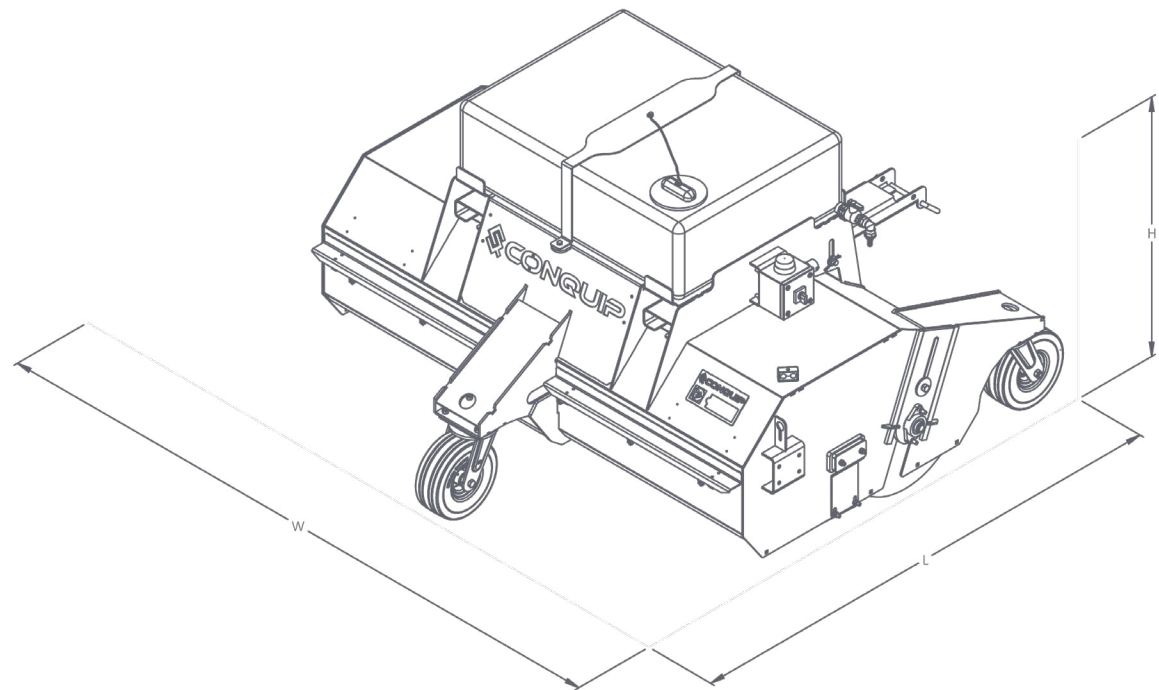


CODE	TYPE	WEIGHT (kg)	TANK CAPACITY (litres)
SA800AK-02100	Standard Drip Feed	560	250
SA800AI-02100	Pressurised Water Spray	560	250
SA800AP-02100	Powerbrush - Standard Drip Feed	585	250
SA800AQ-02100	Powerbrush - Pressurised Water Spray	585	250

SPECIFICATION

STANDARD UNIT

ITEM	PRODUCT CODE
Powerbrush - Standard Drip Feed	SA800AK-02100
Powerbrush - Pressurised Water Spray	SA800AI-02100

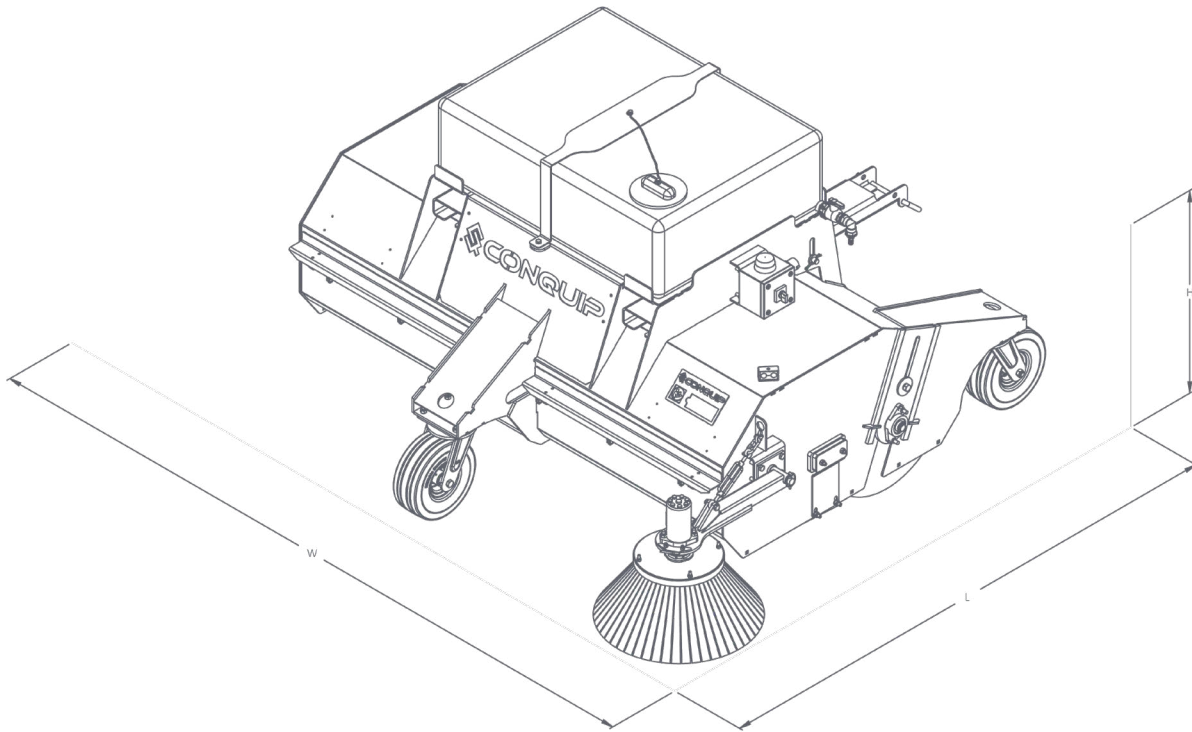


LENGTH (mm)	WIDTH (mm)	HEIGHT (mm)	FORK POCKETS (mm)
2180	2340	1260	148 x 60
2180	2340	1260	148 x 60

SPECIFICATION

WITH KERB BRUSH

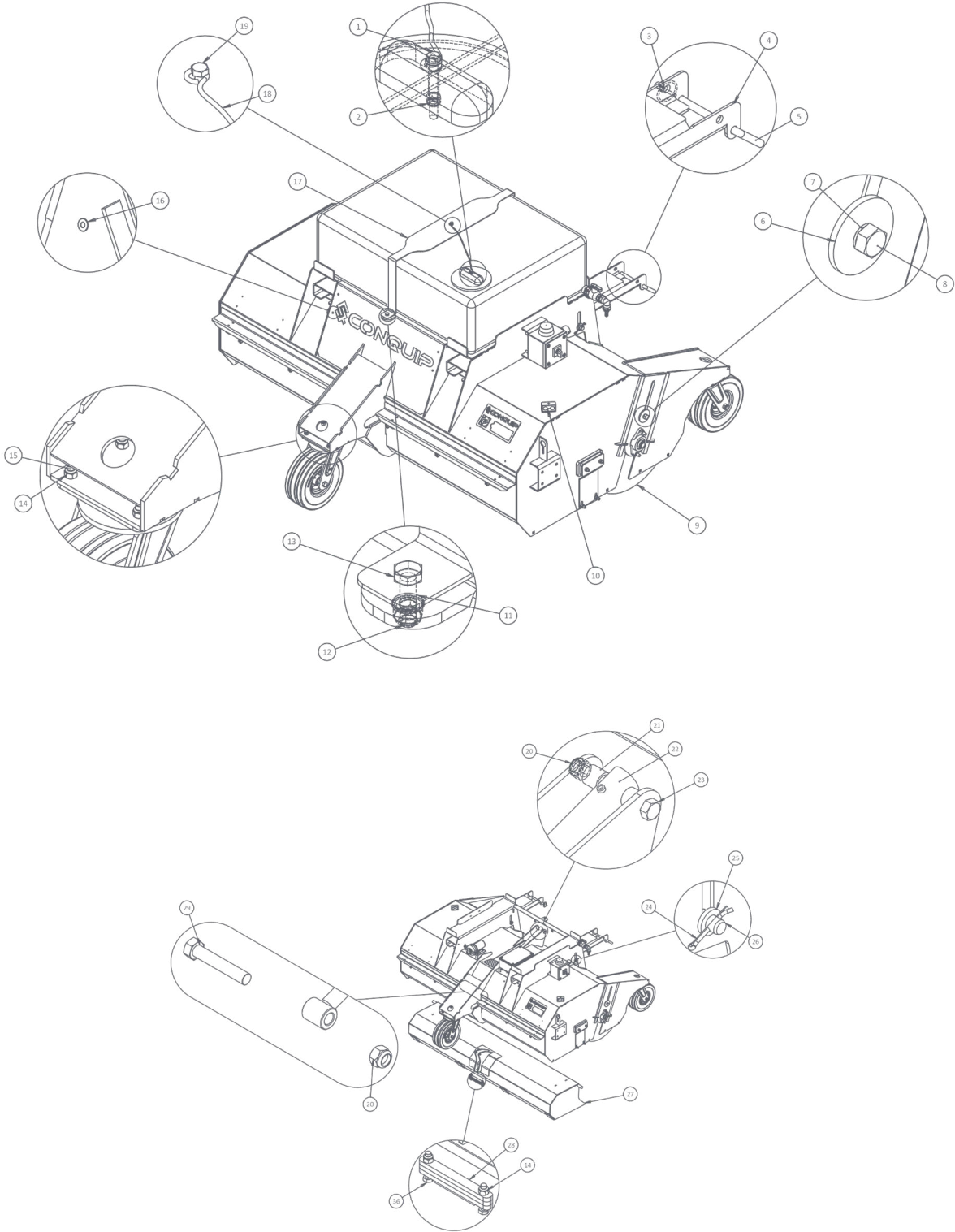
ITEM	PRODUCT CODE
Powerbrush - Standard Drip Feed	SA800AP-02100
Powerbrush - Pressurised Water Spray	SA800AQ-02100



LENGTH (mm)	WIDTH (mm)	HEIGHT (mm)	FORK POCKETS (mm)
2300	2700	1260	148 x 60
2300	2700	1260	148 x 60

PARTS DIAGRAM

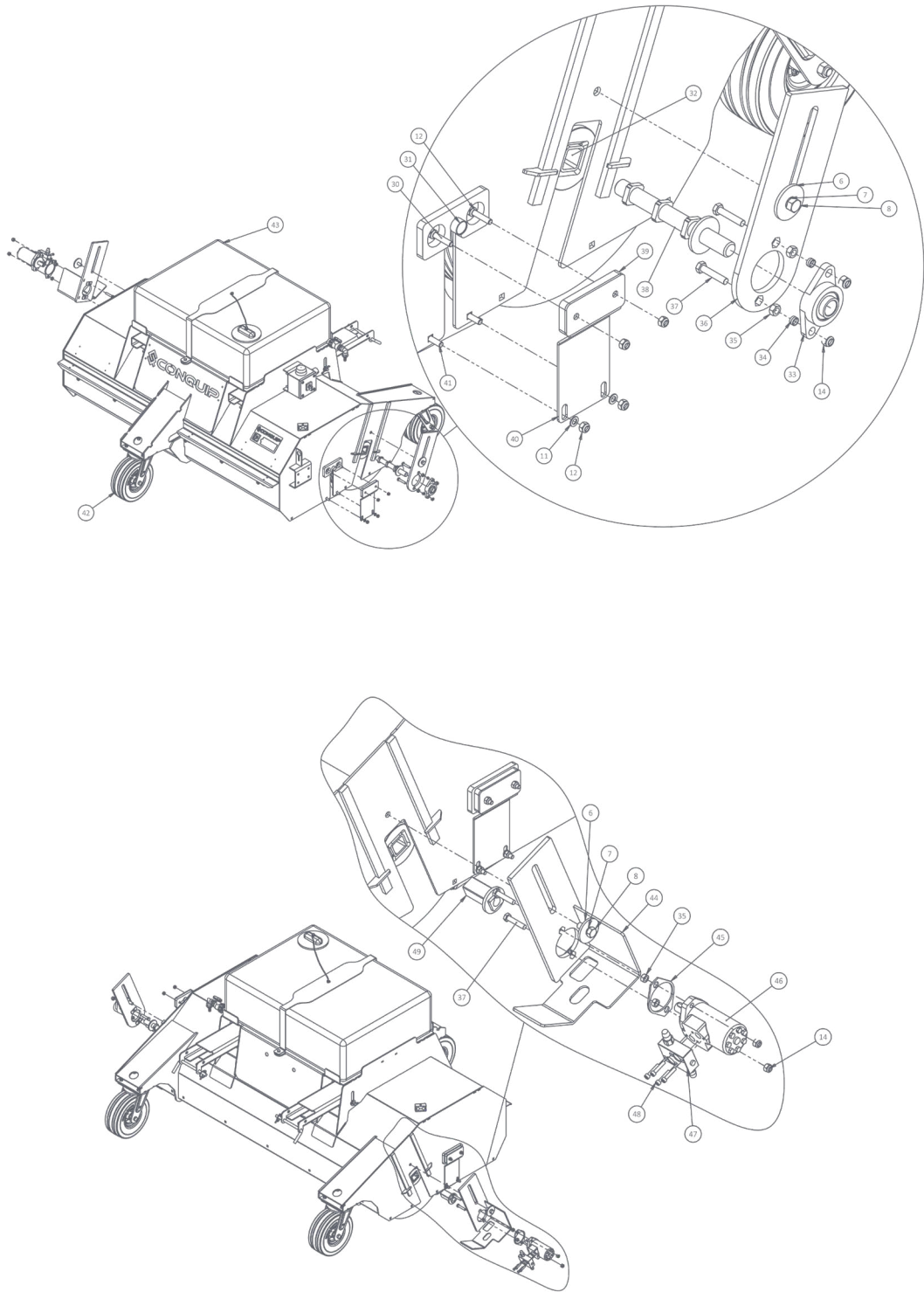
POWERBRUSH FORKLIFT SWEEPER



NOTE: These parts are for this model, they may differ for previous versions. Please contact Conquip with any queries.

PARTS DIAGRAM

POWERBRUSH FORKLIFT SWEEPER



NOTE: These parts are for this model, they may differ for previous versions. Please contact Conquip with any queries.

PARTS LIST

POWERBRUSH FORKLIFT SWEEPER

ITEM NUMBER	PART	DESCRIPTION	QUANTITY
1	ZZ220169	Brush Adjustment Assembly	1
2	ZZ220170	Brush Adjustment Assembly c/w Bearing	1
3	ZZ960079	Washer 4mm x OD: 15.5mm x ID:12.5mm	4
4	ZZ220173	Main Brush Shaft, Length: 2065mm	1
5	ZZ220174	Water Tank Strap	1
6	ZZ220187	Shaft Motor Insert Assembly	1
7	ZZ220176	Fork Pocket Retaining Pins	2
8	ZZ960078	Washer 6mm x OD:37mm x ID:21mm	2
9	ZZ220177	Shaft Bearing Insert Assembly	1
10	ZZ960077	Washer 6mm x OD:73mm x ID:30.5mm	1
11	ZZ220178	Hopper Bearing Bracket	2
12	ZZ220179	Hopper Safety Guard	2
13	ZZ960063	Washer 6mm x OD: 70mm x ID: 17mm	2
14	ZZ990000	Heel Pin, 16mm dia. Max Pocket Width 180mm (Single)	2
15	NS800804	4.8 x 20mm Alu Large Flange Blind (Pop) Rivets	4
16	ZZ990510	Coated Galvanised Restraint Wire, 500mm c/w Nylon Eye	1
17	ZZ960064	Sleeve Bearing, Oilon, OD: 25mm x ID:15mm x 28mm	2
18	ZZ220167	Splined Hub, 8mm Key, 100mm L, OD: 50mm Ø, ID: 25mm Ø	1
19	ZZ990009	Linch Pin 6mm x 42mm	4
20	NS800013	M10 Nyloc Nut	18
21	NS800262	M10 Steel Washer A BZP	2
22	NS800888	M10 x 30mm Coach Bolt	4
23	NS800666	M10 X 30 Hex Head Set BZP	2
24	NS800066	M10 x 35 8.8 HT Hex Head Set Screw BZP	1
25	NS800622	M8 x 30 Hex Head Set Screw BZP	1
26	NS800860	M10x60 Coach Bolt	4

NOTE: These parts are for this model, they may differ for previous versions. Please contact Conquip with any queries.

PARTS LIST

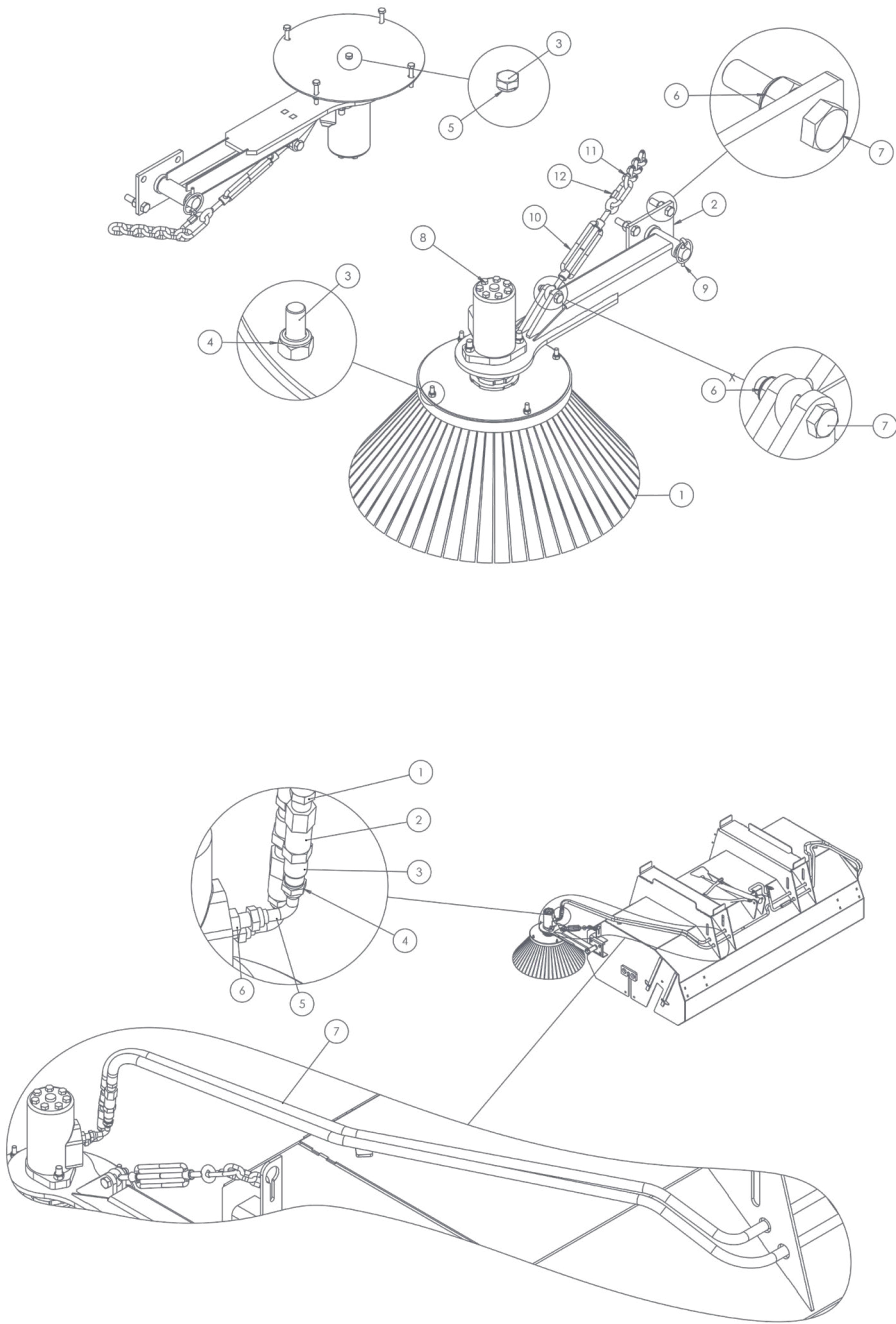
POWERBRUSH FORKLIFT SWEEPER

ITEM NUMBER	PART	DESCRIPTION	QUANTITY
27	NS800015	M12 Nyloc Nut BZP	16
28	NS800889	M12 x 40 Hex Head Set Screws 8.8 HT	12
29	NS800817	M12 x 50 8.8 HT BZP Hex Set Screws	4
30	NS800121	M16 Nyloc Nuts BZP	2
31	NS800249	M16 Spring Washer	2
32	NS800566	M16 x 130 Bolts BZP	1
33	NS800379	M16 x 40 Set Screw	2
34	NS800801	M16 x 70 Bolt BZP	1
35	ZZ220003	Flanged Bearing, 30mm c/w Grease Nipple	1
36	ZZ960065	Hydraulic Cylinder, 20mm Ø Piston, 400mm Stroke	1
37	ZZ270000	Brush 100% PPN 295mm x 600mm Ø	7
38	ZZ220185	Hydraulic Motor AGMR 160	1
39	ZZ990506	Water Tank, 250L, c/w Conquip Branding	1
40	ZZ270141	Swivel Castor, Heavy Duty, 305mm Wheel Diameter	3
41	ZZ220180	Hydraulic Double Hose Clamp, 3/8"	2
42	ZZ220042	2m UPVC Pipe, ID: ½"	1
43	ZZ220040	90° Elbow, ½" Thread, ½" Solvent UPVC	1
44	ZZ220043	End Cap, ID: ½" Solvent UPVC	1
45	ZZ220181	Hydraulic Single Hose Clamp, ½"	2
46	ZZ220126	Water Tap	1
47	ZZ220125	PVC Water Hose	1

NOTE: These parts are for this model, they may differ for previous versions. Please contact Conquip with any queries.

PARTS DIAGRAM

KERB BRUSH & HYDRAULICS



NOTE: These parts are for this model, they may differ for previous versions. Please contact Conquip with any queries.

PARTS LIST

KERB BRUSH

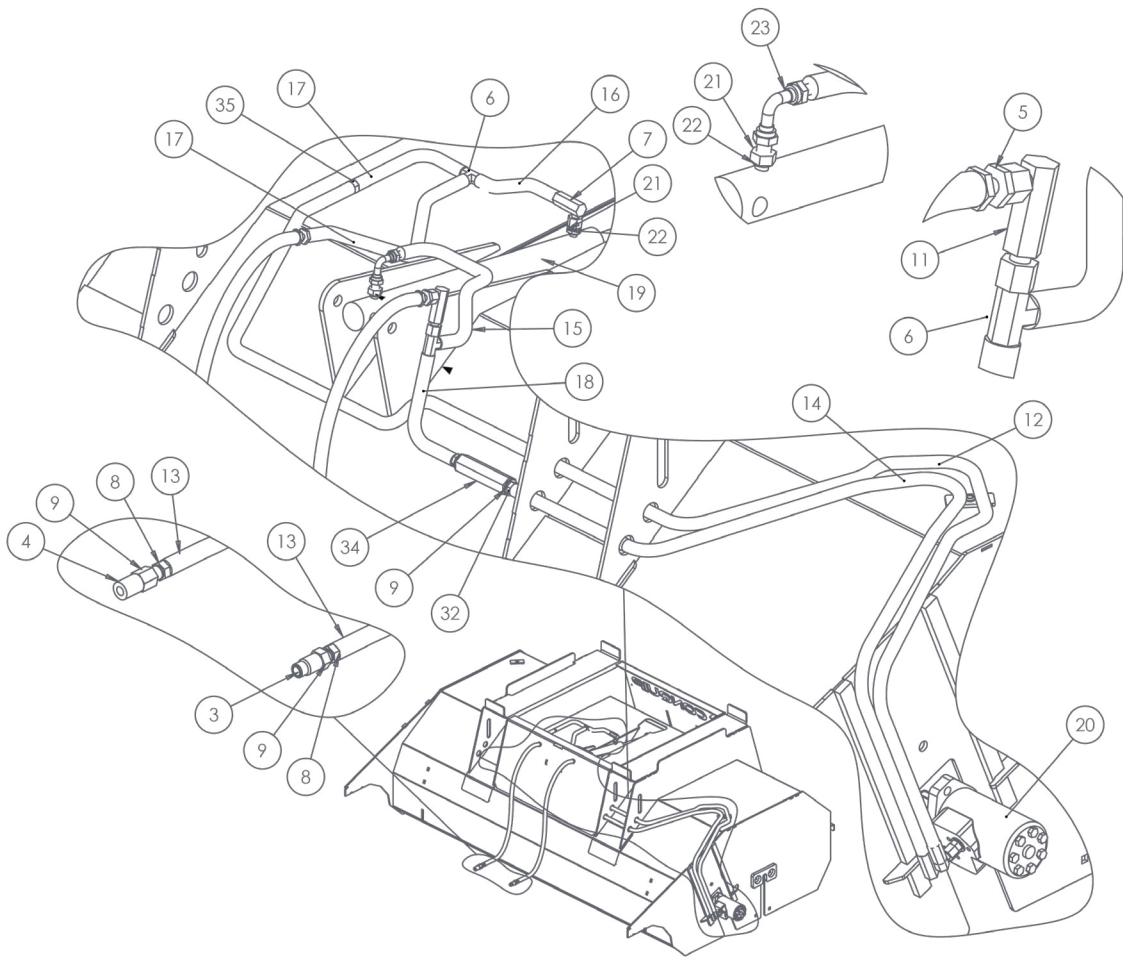
ITEM NUMBER	PART	DESCRIPTION	QUANTITY
1	ZZ220051	Poly Kerb Brush, 4 Fixing Bolts	1
2	ZZ220054	Kerb Brush Bracket	1
3	NS800370	M8 x 50 HT Hex Bolt BZP	5
4	NS800011	M8 Nylon Inset Nut BZP	4
5	NS800378	M8 Spring Washer	1
6	NS800817	M12 x 50 8.8 HT BZP Hex Set Screws	7
7	NS800015	M12 Nylon Inset Nut BZP	4
8	ZZ220185	Hydraulic Motor AGMR 160	1
9	ZZ990009	Linch Pin 6mm x 42mm	1
10	ZZ220054	Kerb Brush Bracket	1
11	ZZ990515	Chain, Galvanised, 8mm x 52mm x 32mm Long Link (per metre)	4
12	ZZ110009	Quick Link, 8mm	1

KERB BRUSH HYDRAULICS

ITEM NUMBER	PART	DESCRIPTION	QUANTITY
1	ZZ220071	Male-Male Adaptor 3/8" X 3/8" BSP	3
2	ZZ220097	1/2" Flat Face Female Quick Release Coupling	2
3	ZZ220096	1/2" Flat Face Male Quick Release Coupling	2
4	ZZ990561	Rubber Bonded Seal 1/2" (Dowty Washer)	4
5	ZZ220202	Male-Female Adaptor Swept 90° 1/2" x 1/2" BSP	2
6	ZZ220070	Male-Male Adaptor, 1/2" X 1/2" BSP	2
7	ZZ220203	Hydraulic Hose, 3/8" Ø, 200mm, Ends: 3/8" F / 1/2" F	2

PARTS DIAGRAM

POWERBRUSH WITHOUT KERB BRUSH HYDRAULICS



NOTE: These parts are for this model, they may differ for previous versions. Please contact Conquip with any queries.

PARTS LIST

POWERBRUSH WITHOUT KERB BRUSH HYDRAULICS

ITEM NUMBER	PART	DESCRIPTION	QUANTITY
1	ZZ220071	Male-Male Adaptor 3/8" X 3/8" BSP	5
2	ZZ990562	Rubber Bonded Seal 3/8" (Dowty Washer)	4
3	ZZ220092	3/8" Flat Face male Quick Release Coupling	1
4	ZZ220093	3/8" Flat Face Female Quick Release Coupling	1
5	ZZ220193	Bulkhead Fitting c/w Locknut, 3/8" BSP	2
6	ZZ220123	3/8" M/M/M Tee Piece	2
7	ZZ220122	Male-Female Adaptor Compact 90° 3/8" x 3/8" BSP	3
8	ZZ220137	Male-Male Adaptor, 3/8" X 1/2" BSP	6
9	ZZ990561	Rubber Bonded Seal 1/2" (Dowty Washer)	6
10	ZZ220138	1 Way Valve Female to Female 1/2in	1
11	ZZ220194	Female-Female Adaptor Compact 90° 3/8" x 3/8" BSP	1
12	ZZ220195	Hydraulic Hose, 3/8" Ø, 2200mm, Ends: 3/8" F / 3/8" F	1
13	ZZ220184	Hydraulic Hose, 3/8" Ø, 2100mm, Ends: 3/8" F / 3/8" F	2
14	ZZ220196	Hydraulic Hose, 3/8" Ø, 1600mm, Ends: 3/8" F / 3/8" F	1
15	ZZ220197	Hydraulic Hose, 3/8" Ø, 470mm, Ends: 3/8" F / 3/8" F	1
16	ZZ220198	Hydraulic Hose, 3/8" Ø, 2100mm, Ends: 3/8" F / 3/8" Compact 90° F	1
17	ZZ220199	Hydraulic Hose, 3/8" Ø, 220mm, Ends: 3/8" F / 3/8" F	2
18	ZZ220200	Hydraulic Hose, 3/8" Ø, 170mm, Ends: 3/8" F / 3/8" F	1
19	ZZ960065	Hydraulic Cylinder, 20mm Ø Piston, 400mm Stroke	1
20	ZZ220185	Hydraulic Motor AGMR 160	1
21	ZZ220201	Male-Male Adaptor, 1/4" X 3/8" BSP	2
22	ZZ990563	Rubber Bonded Seal 1/4" (Dowty Washer)	2

OPERATIONAL PROCEDURES



IMPORTANT USAGE NOTES

- The Powerbrush is supplied with heel pins that must be fitted correctly before use. If the heel pins are missing, do not use the equipment or fit alternatives - contact Conquip Engineering Group for a replacement.
- Drain the water tank in cold weather to prevent freezing.
- Keep the hydraulic hoses safely off the ground to avoid them getting damaged.
- DO NOT disconnect the hydraulic hoses unless the pressure from the auxiliary service has been released.
- Never allow brick banding, barbed wire or any straps to be picked up by the Powerbrush.
- Always ensure the hydraulic system is in operation before use.
- DO NOT drive directly over fixed objects, such as manholes.
- Close the hopper fully when not using the Powerbrush to avoid pressure.
- Only compatible with forklifts or telehandlers with a double acting auxiliary service.
- 18 AH battery takes approximately 6 hours 45 mins to charge from dead.

KERB BRUSH ASSEMBLY INSTRUCTIONS

01. Bolt on the Kerb Brush Pin Bracket (ZZ220054) to the Powerbrush, using four M12 x 50mm bolts provided.
02. Slide the gulley brush arm onto the pin.
03. Insert the linch pin to secure the arm to the bracket.
04. Pass the chain through the anchor point to a position where the bristle of the kerb brush is just off the floor.
05. Use the turn buckle for fine adjustment to a point where the front bristles are just touching the floor with a small amount of deflection.

SETTING UP THE POWERBRUSH

01. To connect the Powerbrush to your forklift, set the machine's forks to the correct width for the Powerbrush fork pockets. Make sure that they are equidistant from the centre.
02. Drive the forklift/ telehandler to the Powerbrush. Align the forks with the Powerbrush fork pockets and fully insert the forks.



03. Fit the fork retaining pins behind the heel of the forks to secure the Powerbrush to the machine.



04. Apply the park brake and switch off the forklift engine.
05. Release any pressure in the auxiliary hydraulic line of the machine by operating the control lever.



06. Detach the main hose couplings on the Powerbrush and connect them to the two outputs on the machine. The quick release female on the Powerbrush connects to the male on the machine and the male to the female.

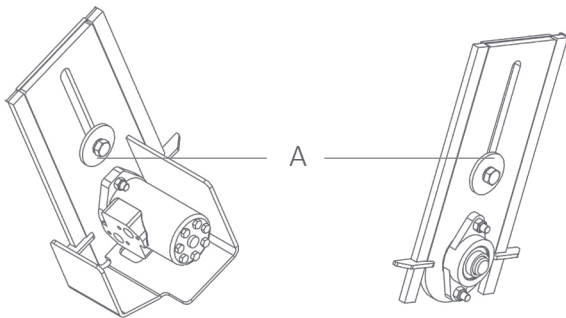


07. Check that the main brush is rotating and the hopper is opening and closing fully.



08. Ensure that the main brush is adjusted correctly. Always set up the Powerbrush on a level surface. The bristles should be touching the ground very slightly with a small deflection where they meet the floor.

09. To adjust the brush, undo bolt 'A' on one side of the brush (see diagram) and apply a small amount of pressure to push the brush to the ground. Re-tighten the bolt. Repeat this procedure to the other side of the brush.



10. The Powerbrush is now ready for use.

NOTE: Configuration may differ on different forklift makes and models.



USING THE POWERBRUSH

01. Open the water tap to allow water to dribble evenly from the dispenser bar at the front of the Powerbrush.

02. For the pressurised water spray model, turn the electric switch on.



03. Lower the brush to the floor.

04. Ensure that the floating forks are centralised and the forks are level.

05. Activate the brush by operating the hydraulic circuit of the forklift or telehandler.

06. Drive forward at a suitable speed to achieve the desired sweep results.



07. Once the hopper is full, lift the Powerbrush to a suitable location and reverse the flow of the hydraulic circuit to empty the hopper.

AFTER USE

- 01. To remove the Powerbrush from a forklift or telehandler, first park in a suitable place away from site traffic but somewhere that is easily accessible when the unit is required again.
- 02. Apply the park brake and switch off the forklift engine.
- 03. Operate the auxiliary control lever, without the engine running, to release the pressure and close the hopper. Closing the hopper will prevent a build-up in the hydraulic hoses.
- 04. Exit the machine cab to follow the next steps.
- 05. Turn the water tap to the 'off position'. If using the pressurised water spray, make sure the power supply switch is turned off so that the orange beacon is no longer flashing. In freezing conditions, remove the water hose and drain the tank.

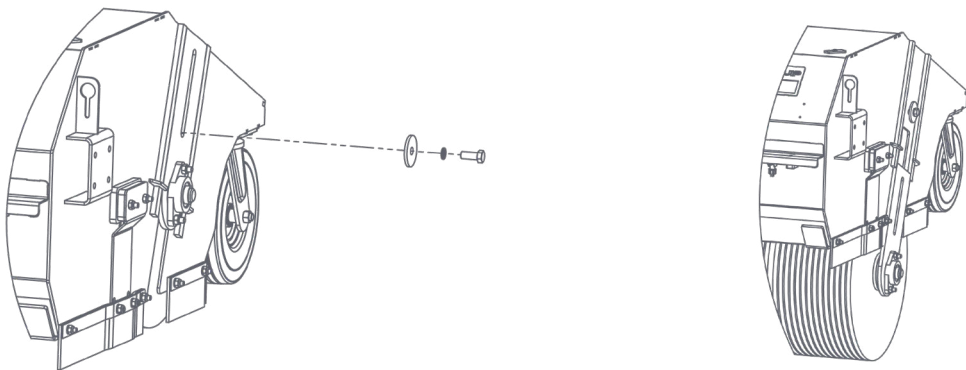


- 06. Remove the hydraulic hoses from the two outputs on the arm of the machine. CAUTION: Use gloves as the connections will be hot due to hydraulic oil passing through the hoses.
- 07. Remove the fork retaining pins and refit them into their storage holes.
- 08. Return to the machine's cab to detach the Powerbrush from the forklift or telehandler.
- 09. Slowly reverse the forklift or telehandler to remove the forks from the fork pockets.
- 10. Conquip advise lubricating the grease points after use, as demonstrated in our 'How to use the Powerbrush' video. Scan the QR code at the top of this page to watch.
- 11. Recharge the battery. 18 AH battery takes approximately 6 hours 45 mins to charge from dead.

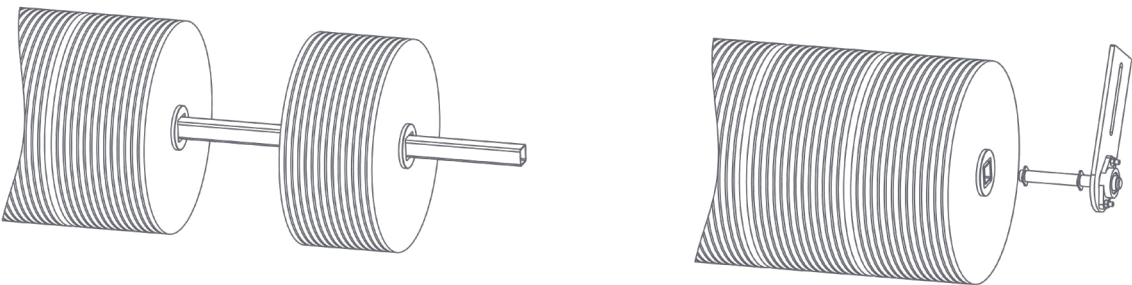


REPLACING THE MAIN BRUSH SECTIONS

- 01. Remove the bolt and washer from the top plate fixing on both sides of the Powerbrush body, and detach the hydraulic hoses.
- 02. With the fixings now removed on both sides, lift the Powerbrush with the forklift. The brush, along with any fixings attached, will now slide down the plate guide and detach itself from the Powerbrush body.



- 03. Once the brush is fully detached from the Powerbrush body, detach the fixing, bearing and bearing shaft (as shown).
- 04. Once fixing and bearing parts are removed, the brush sections within the brush can be pulled out.



MAINTENANCE & INSPECTION

MAINTENANCE REGIME

- It is mandatory that the equipment is thoroughly examined regularly, by a qualified engineer, to ensure compliance with relevant regulations. Conquip recommend carrying out a thorough examination every six months.
- This equipment may incorporate various loose and detachable items including, but not limited to pins, bolt assemblies and adaption plates. Refer to the separate requirements for the safe use of those items.
- When not being used, store the unit in a clean, upright condition and in a safe place where it will be protected from thieves and unauthorised users.
- This equipment must be inspected by the responsible person before each use and then regularly, as determined by your risk assessment or working practice. If you have any concerns about the equipment’s condition or suitability, do not use it.

VISUAL INSPECTION CHECKLIST

INSPECTION ITEMS	RESULTS		COMMENTS
	SATISFACTORY	UNSATISFACTORY	
Serial Number			CQ.....
Product Code			
Working Load Limit (kg)			
Conforms to user guide specification			
Check heel pins for damage			
Check heel pin retaining clips in place			
Check castor wheels condition			
Check the seven grease points lubricated			
Check main brush adjusted correctly			
Check for hydraulic leaks			
Check water system operational			
General visual body inspection			
SIGNATURE			
Name	Position	Qualification	Signature & Date

GENERAL SAFETY INSTRUCTIONS

The equipment should be properly operated and maintained to keep it in a safe, efficient operating condition. Be sure that all fixings and components are free of mud or other matter that might cause issues hazardous to the operator, serviceman, or other personnel or equipment. Report all malfunctions to those responsible for maintenance, and do not operate the equipment until corrected. Normal service or maintenance performed as required can prevent unexpected and unnecessary downtime.

This operations manual describes general inspections, servicing and operation with the normal safety precautions required for normal servicing and operating conditions. It is not a guide, however, for abnormal conditions or situations, and therefore, servicemen and operators must be safety conscious and alert to recognise potential servicing or operating safety hazards at all times, and take necessary precautions to assure safe servicing and operation of the equipment.



M002
Refer to instructions manual



M004
Wear eye protection



M008
Wear safety footwear



M009
Wear protective gloves



M010
Wear protective clothing



M014
Wear head protection



M015
Wear high-visibility clothing

GENERAL NOTES

- Read this operations manual and learn the operating characteristics and limitations of the equipment. Know what operating clearances the machine requires.
- Read and understand all the safety signs prior to operation.
- If the safety signs are obstructed by dirt or debris, clean them using mild soap and water prior to operation.
- If the safety signs are damaged or illegible, replace them immediately, prior to operation.
- Be aware of operating hazards that weather changes can create on the job. Know proper procedures to follow when a severe rain or electrical storm strikes.
- Never attempt to operate or work on machinery when not feeling physically fit.
- Never wear loose clothing, rings, watches, heavy gloves etc., that might catch and result in injury.
- Know what safety equipment is required and use it. Such equipment may be: hard hat, safety glasses, reflector type vests, protective gloves and safety footwear.

TERMS & CONDITIONS

CONQUIP ENGINEERING GROUP STANDARD PRODUCT WARRANTY

01. COMMENCEMENT

1.1 This Warranty shall commence on the Commencement Date and shall continue until the earlier of:

- (a) the Expiry Date; or
- (b) the date on which it may be voided in accordance with clause 4.1(b)

when it shall terminate automatically without notice.

02. DUTY OF GOOD FAITH

2.1 The Purchaser shall in the exercise of its rights under this Warranty and in the compliance with its obligations under this Warranty be subject to and shall in all respects owe and comply with a duty of good faith to the Warrantor.

03. NATURE AND EXTENT OF COVER

3.1 Subject to clause 3.2 the Warrantor agrees and undertakes to the Purchaser that it shall be liable to the Purchaser under and in accordance with the terms of this Warranty in the event that:

- (a) prior to the Expiry Date the Purchaser shall notify a Warranty Claim to the Warrantor; and
- (b) the Equipment or any relevant part of the Equipment shall have become unusable as the result of defective material or defective workmanship prior to the Expiry Date.

3.2 The Warrantor's obligation under clause 3.1 shall be expressly subject to the provisions of clauses 4, 5 and 6 and conditional upon the Purchaser's compliance in full with the provisions of clause 7.

04. RESTRICTIONS

4.1 The following restrictions apply to this Warranty:

- (a) This Warranty is personal to the Purchaser and neither the legal benefit nor legal burden of this warranty may be assigned or novated or otherwise transferred by the Purchaser to any other party. Any purported assignment, novation or transfer shall not be binding upon the Warrantor.
- (b) This Warranty shall be void in the event that the Purchaser:

- (i) cannot provide authentic and original documentary evidence that the Purchaser has during the period between the Commencement Date and the Expiry Date complied with the Maintenance and Servicing Requirements; and/or
- (ii) has, during the period between the Commencement Date and the Expiry Date, exceeded the Purchaser's Usage Cycle Parameters; and/or
- (iii) has, during the period between the Commencement Date and the Expiry Date, exceeded the Purchaser's Use Parameters; and/or
- (iv) has carried out, or procured the carrying out by any third party of, any repair to the Equipment or any part of the Equipment which is not an Authorised Repair; and/or
- (v) has operated the Equipment after having replaced any part of the Equipment with a part which has not been supplied and fitted by the Warrantor; and/or
- (vi) has modified the Equipment in any way prior to use.

05. EXCLUSIONS

5.1 The following are excluded from the scope of this Warranty:

- (a) Loss of and/ or damage to the Equipment or any part of it resulting from any collision between the Equipment and any other fixed or stationary or mobile object whatsoever, irrespective of whether that collision was or was not caused by the Purchaser; and/or
- (b) Loss of and/or damage to any personal property and/or possessions or other equipment not forming part of the Equipment but which is present in or about the Equipment; and/or
- (c) loss and/or damage which is covered by any other insurance policy taken out and maintained by the Purchaser or in respect of which the Purchaser has a contractual obligation to do so; and/or
- (d) loss and/or damage to the equipment which is consistent with the use by the Purchaser of the Equipment:
 - (i) in compliance with the Maintenance and Servicing Requirements; and
 - (ii) in compliance with the Usage Cycle Parameters; and
 - (iii) in compliance with the Use Parameters; and
 - (iv) having only carried out Authorised Repairs to the Equipment; and
 - (v) having all and any replacement parts fitted by the Warrantor; and
 - (vi) in unmodified form.

06. LIMITATION OF LIABILITY

6.1 The Warrantor’s liability to the Purchaser shall be limited as follows:

- (a) The Warrantor shall not in any circumstances be liable to the Purchaser for indirect and/or consequential and/or economic loss suffered and/or incurred as the case may be by the Purchaser; and
- (b) The Warrantor shall only be liable to the Purchaser for the reasonable and proper costs reasonably and properly incurred by the Purchaser directly in connection with the repair and/or replacement (at the Warrantor’s absolute discretion) of the Equipment or any part of the Equipment; and
- (c) The Warrantor’s liability to the Purchaser shall notwithstanding any other provision of this Warranty, not in any circumstances exceed the Purchase Price of the Equipment.

07. WARRANTY CLAIMS

7.1 The Purchaser shall in respect of any claim against the Warrantor under this Warranty and within 24 hours of the occurrence of the subject matter of the Warranty Claim:

- (a) Complete in full and submit to the Warrantor a Warranty Claim in the form annexed to Schedule 4;
- (b) Provide date stamped or date identifiable photographs evidencing the claim; and
- (c) Make the Equipment or the relevant part of the Equipment available to the Warrantor for inspection within 48 hours of notification of the relevant Warranty Claim.

08. ENTIRE AGREEMENT

8.1 This Warranty constitutes the entire agreement between the parties and supersedes and extinguishes all previous promises, assurances, warranties, representations and understandings between them, whether written or oral, relating to its subject matter.

8.2 Each party agrees that it shall have no remedies in respect of any statement, representation, assurance or warranty (whether made innocently or negligently) that is not set out in this Warranty. Each party agrees that it shall have no claim for innocent or negligent misrepresentation or negligent misstatement based on any statement in this Warranty.

No variation of this Warranty shall be effective unless it is in writing and signed by the parties (or their authorised representatives).

09. WAIVER

No failure or delay by a party to exercise any right or remedy provided under this Warranty or by law shall constitute a waiver of that or any other right or remedy, nor shall it prevent or restrict the further exercise of that or any other right or remedy. No single or partial exercise of such right or remedy shall prevent or restrict the further exercise of that or any other right or remedy.

10. SEVERANCE

10.1 If any provision or part-provision of this Warranty is or becomes invalid, illegal or unenforceable, it shall be deemed deleted, but that shall not affect the validity and enforceability of the rest of this Warranty.

10.2 If any provision or part-provision of this Warranty is deemed deleted under clause 10.1 the parties shall negotiate in good faith to agree a replacement provision that, to the greatest extent possible, achieves the intended commercial result of the original provision.

11. THIRD PARTY RIGHTS

11.1 This Warranty does not give rise to any rights under the Contracts (Rights of Third Parties) Act 1999 to enforce any term of this Warranty.

12. GOVERNING LAW

12.1 This Warranty and any dispute or claim (including non-contractual disputes or claims) arising out of or in connection with it or its subject matter or formation shall be governed by and construed in accordance with the law of England and Wales.

13. JURISDICTION

13.1 Each party irrevocably agrees that the courts of England and Wales shall have exclusive jurisdiction to settle any dispute or claim (including non-contractual disputes or claims) arising out of or in connection with this Warranty or its subject matter or formation.

EC DECLARATION OF CONFORMITY

IN ACCORDANCE WITH EN ISO 17050-1:2004

Declaration: As defined by the Machinery Directive 2006/42/EC and subsequent amendments

We, CONQUIP ENGINEERING GROUP, herewith declare that the following indicated equipment meets the fundamental health and safety requirements concerning the EU guideline(s), due to their design and manufacture.

This declaration will be rendered null and void if the machine is changed without our approval.

SIGNED:



DATED: 2024

Garry Critchley, Chief Executive Officer

PRODUCT CODES	GENERAL DESCRIPTION / DESIGNATION	WORKING LOAD LIMIT
SA800AK-02100	Standard Drip Feed	N/A
SA800AI-02100	Pressurised Water Spray	N/A
SA800AP-02100	Powerbrush - Standard Drip Feed	N/A
SA800AQ-02100	Powerbrush - Pressurised Water Spray	N/A

ITEM	CODE	DESCRIPTION
EC DIRECTIVE/ REGULATION	2006/42/EC	Directive 2006/42/EC- new machinery directive
HARMONISED STANDARDS	BS EN ISO 12100:2010	Safety of machinery General principles for design Risk assessment and risk reduction
	BS EN 1993-1-1: 2005	Eurocode 3. Design of steel structures General rules and rules for buildings
OTHER REGULATIONS	LOLER 1998	Lifting Operations and Lifting Equipment Regulations 1998 (LOLER)
	PUWER 1998	Provision and Use of Work Equipment Regulations 1998 (PUWER)

TALKING TO US IS EASY
WE'RE HERE TO HELP

Call us on (02) 8844 4590
Email us at sales@conquipgroup.com.au
www.cqegroup.com/au

